



## Uniquely shaped for flat roofs.

The made-in-the-USA BX Ballasted System delivers superior power density and design flexibility for solar arrays on flat roofs. The glass-reinforced, composite BX Chassis is engineered for extreme structural loading and shaped to be roof-friendly and easy to install.

Certified BX plan sets can be obtained instantly through our online Design Assistant or by contacting IronRidge Commercial Services. Our responsive support team is always ready to provide guidance.



### Glass-Reinforced Composite

Corrosion-free and engineered for long-term structural performance.



### Commercial Services

Engineering support to optimize system design.



### Class A Fire Rating

Certified to maintain the fire resistance rating of the existing roof.



### Design Assistant

Online software makes it simple to create, share, and price projects.



### UL 2703 & 3741 Listed

Entire system and components meet the latest UL safety standards.



### 25-Year Warranty

Products guaranteed to be free of impairing defects.

## Chassis

### 5° Chassis



Ballasted mounting for 5-degree tilt angle.

- Max load spread design
- Fully encloses ballast
- 360 degree drainage

### 10° Chassis



Ballasted mounting for 10-degree tilt angle.

- Max load spread design
- Fully encloses ballast
- 360 degree drainage

### Top Clamp



Combines with Bottom Clamp for securing module.

- Secures above module
- One-tool attachment
- Mill aluminum 6000 series

### Bottom Clamp



Combines with Top Clamp to up structural connection.

- Secures below module
- One-tool attachment
- Mill aluminum 6000 series

## Grounding

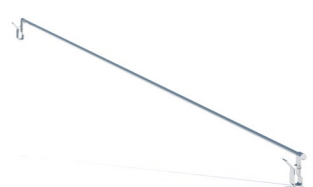
### 8" Mod Bonding Jumper



Bond adjacent modules in the array.

- Press-on installation
- Tin-plate copper wire
- Crimped connection

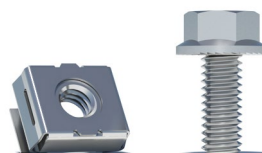
### 38" Row Bonding Jumper



Complete row-to-row bonding in the array.

- Press-on installation
- Tin-plate copper wire
- Crimped connection

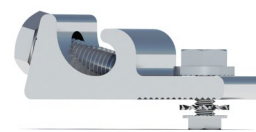
### MLPE Mounting Hardware



Optional mounting hardware for MLPE devices.

- Cap screw and cage nut
- 5/16" socket install
- Stainless steel 300 series

### PV Mod Grounding Lug



Connect arrays to equipment ground.

- Low profile
- Mounts to module frame
- One per continuous array

## Accessories

### Accessory Frame Bracket



Mount MLPE devices directly to module frame.

- Fits any module frame
- Mill aluminum finish
- UL 2703 listed

### Cable & Edge Ties



Manage equipment wires with weatherproof ties.

- 12" length, packs of 100
- UV stabilized polyamide
- Black finish

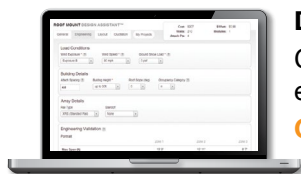
### Flat Roof Attachment Kit



Add flat roof anchors to the BX ballasted system.

- Includes hardware
- For ballast-attached hybrid
- Uses locally-sourced strut

## Resources



### Design Assistant

Go from rough layout to fully engineered system in minutes.

[Go to IronRidge.com](http://Go to IronRidge.com)



### Chassis Display #7 Recycle Label

Like most glass-filled nylons, it is 100% recyclable—usually living on in furniture.

[Find more info at epa.gov/recycle](http://Find more info at epa.gov/recycle)