

SOLARMOUNT

FEATURING SOLARMOUNT

- Designed for Unirac's Solarmount rail systems and certified to UL2703A for low-slope AND steep-slope roofs
- One-step butyl application for easy install and reliable waterproofing

DIFFERENT CLAMPS FOR DIFFERENT NEEDS

- Universal AF mid clamps and end clamps adjust to module heights from 30-46mm in a great looking, easy to install fastener
- Pro-series clamps feature hidden fasteners for fantastic aesthetics
- Standard clamps feature tight row spacing and various clamps to accommodate module frames up to 51mm in height

OPTIONS FOR ANY APPLICATION

- Solarmount Standard and Solarmount Light rails profiles for installations across the country, including Puerto Rico
- Huge selection of attachments for any roof form comp shingle to tile
- Adjustable tilt legs certified to UL2703 to dial in your system just right

Components available in Mill and Dark finishes for any aesthetic and any budget



OPTIONAL FRONT TRIM

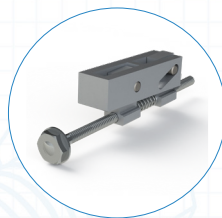
Two rail profiles for light and heavy duty applications



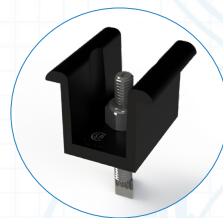
UNIVERSAL END CLAMP



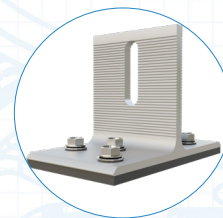
UNIVERSAL MID CLAMP



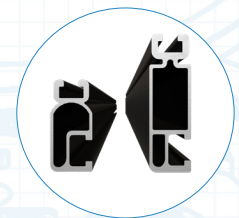
CONCEALED SM
END CLAMP



SM PRO SERIES
MID CLAMP



SOLARMOUNT
BUTYL



SOLARMOUNT PROFILE
AND LIGHT PROFILE

WHY SOLARMOUNT?

SOLARMOUNT is the professionals' choice for residential PV mounting applications. Every aspect of the system is designed for an easier, faster installation experience. SOLARMOUNT is a complete solution with universal clamps, tons of attachment options, full system UL 2703 certification, and 25-year warranty. Sleek rails for both light and heavy duty applications, with optional trim, make for a reliable, cost-effective, great looking racking solution.